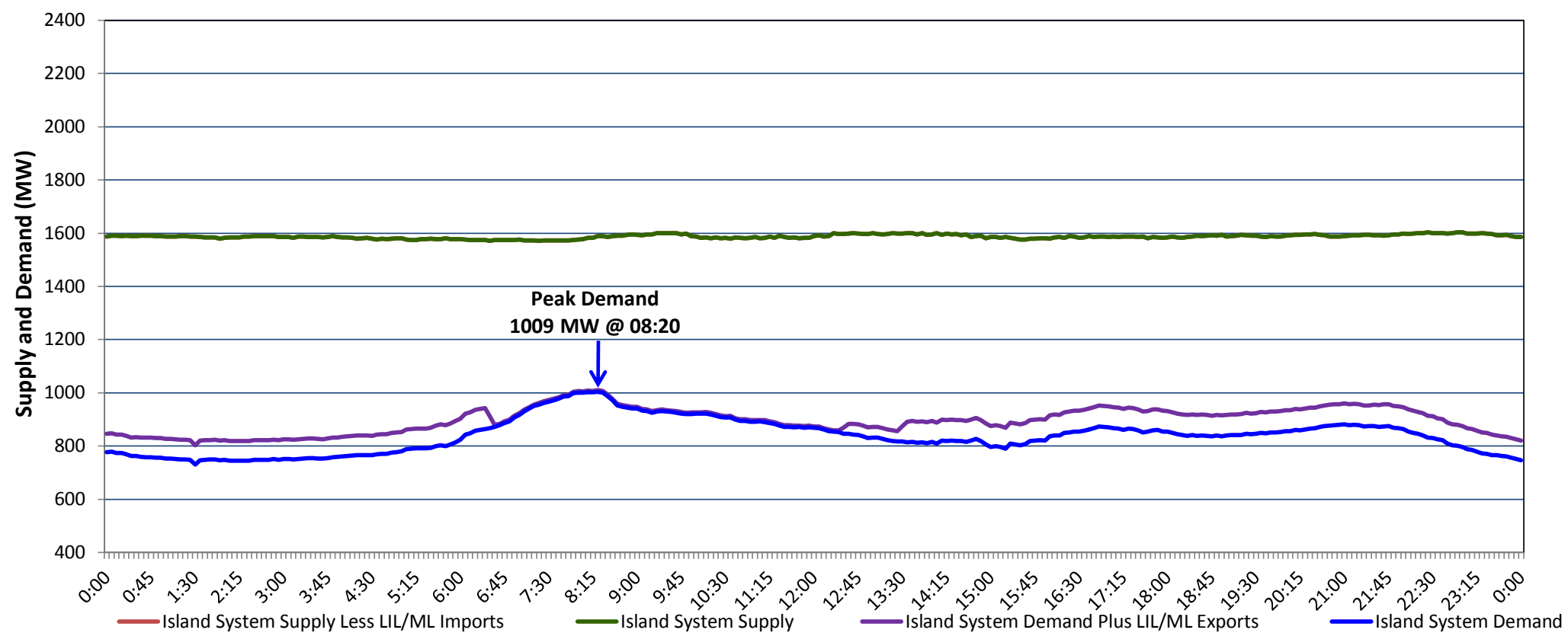


**Newfoundland Labrador Hydro (NLH)
Supply and Demand Status Report Filed Wednesday, May 12, 2021**

**Section 1
Island Interconnected System Supply, Demand & Exports
Actual 24 Hour System Performance For Tuesday, May 11, 2021**



Supply Notes For May 11, 2021

1,2

- A As of 0805 hours, April 09, 2021, Holyrood Unit 3 unavailable due to planned outage (150 MW).
- B As of 1047 hours, April 25, 2021, Bay d'Espoir Unit 1 unavailable due to planned outage (76.5 MW).
- C As of 0709 hours, May 07, 2021, Bay d'Espoir Unit 2 unavailable due to planned outage (76.5 MW).
- D As of 1827 hours, May 07, 2021, Holyrood Unit 1 available but not operating (170 MW).
- E At 0952 hours, May 11, 2021, Paradise River Unit unavailable due to planned outage (8 MW).
- F At 1217 hours, May 11, 2021, Paradise River Unit available (8 MW).

**Section 2
Island Interconnected Supply and Demand**

Wed, May 12, 2021	Island System Outlook ³	Seven-Day Forecast	Temperature (°C)		Island System Daily Peak Demand (MW)	
			Morning	Evening	Forecast	Adjusted ⁷
Available Island System Supply: ⁵	1,580 MW	Wednesday, May 12, 2021	5	6	1,025	1,025
NLH Island Generation: ⁴	1,220 MW	Thursday, May 13, 2021	4	6	1,035	1,035
NLH Island Power Purchases: ⁶	115 MW	Friday, May 14, 2021	5	5	990	990
Other Island Generation:	245 MW	Saturday, May 15, 2021	5	5	915	915
ML/LIL Imports:	- MW	Sunday, May 16, 2021	3	3	990	990
Current St. John's Temperature & Windchill:	5 °C N/A	Monday, May 17, 2021	5	3	980	980
7-Day Island Peak Demand Forecast:	1,035 MW	Tuesday, May 18, 2021	5	3	950	950

Supply Notes For May 12, 2021

3

- Notes:
1. Generation outages for running and corrective maintenance are included. These are not unusual for power system operations. They generally do not impact customer supply. The power system operators schedule outages to system equipment whenever possible to coincide with periods when customer demands are low and sufficient supply reserves are available. However, from time to time equipment outages are necessary and reserves may be impacted.
 2. Due to the Island system having no synchronous connections to the larger North American grid, when there is a sudden loss of large generating units there may be a requirement for some customer's load to be interrupted for short periods to bring generation output equal to customer demand. This automatic action of power system protection, referred to as under frequency load shedding (UFLS), is necessary to ensure the integrity and reliability of system equipment. Under frequency events have typically occurred 5 to 8 times per year on the Island Interconnected System and the resultant customer load interruptions are generally less than 30 minutes. With the activation of the Maritime Link frequency controller during the winter of 2018, UFLS events have occurred less frequently.
 3. As of 0800 Hours.
 4. Gross output including station service at Holyrood (24.5 MW) and improved NLH hydraulic output due to water levels (35 MW).
 5. Gross output from all Island sources (including Note 4).
 6. NLH Island Power Purchases include: CBPP Co-Gen, Nalcor Exploits, Rattle Brook, Star Lake, Wind Generation and capacity assistance (when applicable).
 7. Adjusted for curtailable load, market activities and the impact of voltage reduction when applicable.

**Section 3
Island Peak Demand Information
Previous Day Actual Peak and Current Day Forecast Peak**

Tue, May 11, 2021	Actual Island Peak Demand ⁸	08:20	1,009 MW
Wed, May 12, 2021	Forecast Island Peak Demand		1,025 MW

- Notes: 8. Island Demand / LIL / ML Exports (where applicable) is supplied by NLH generation and purchases, plus generation owned and operated by Newfoundland Power and Corner Brook Pulp & Paper (Deer Lake Power, DLP).